

ALUVISION Hi-LED 55

PRODUCT OVERVIEW

SPECIFICATION

2.5mm LED Videowall Solution ▼

Aluvision's Hi-LED 55 is a robust panel with a competitive pixel pitch. The panel consists of a full aluminium frame which boasts increased durability and structural fidelity.

RESOLUTION	192px x 192px
WEIGHT	9.8 KG
MAX POWER DRAW	101 W
BRIGHTNESS	1,000 nits
INGRESS PROTECTION	IP 44
OPTIMAL VIEW DISTANCE	2.5m
PIXEL PITCH	2.5mm
DIMENSIONS	496mm x 496mm x 55mm



USE CASES

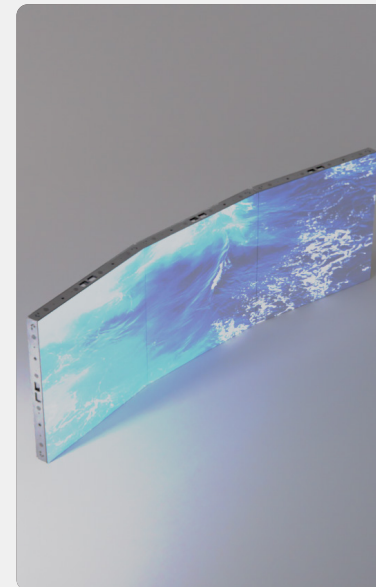
FLAT ▼

The Hi-LED 55 can be utilised to create videowalls of varying size with the use of panel arranged flat.



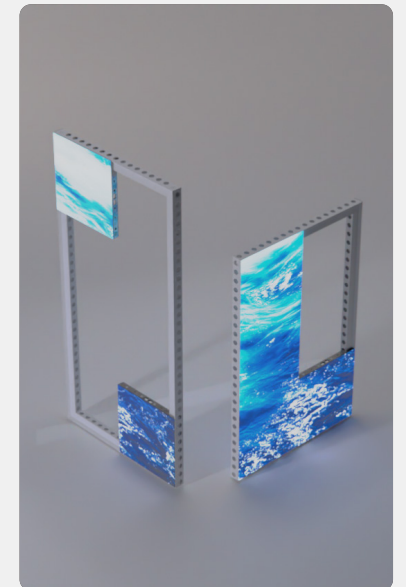
FACETED ▼

The Hi-LED 55 can be utilised with angled blocks to create faceted curves on a larger scale.



MODULAR FRAME ▼

The modular frame allows panels to create truly unique arrangements, all whilst reducing waste.



CABINET DIMENSIONS

For more information, please get in touch with us:
sales@dbpixelhouse.com | +44 (0)345 226 3083

