

DIGILED HRi 3.9

PRODUCT OVERVIEW

SPECIFICATION

3.9mm LED Videowall Solution ▼

The DigiLED HRi 3.9 panels are the ideal, cost-effective solution for large-scale LED videowalls that are either flying from truss, or are to be viewed from a distance that is further than 2.6mm panels.

RESOLUTION **192px x 192px**

WEIGHT **9 KG**

MAX POWER DRAW **180 W**

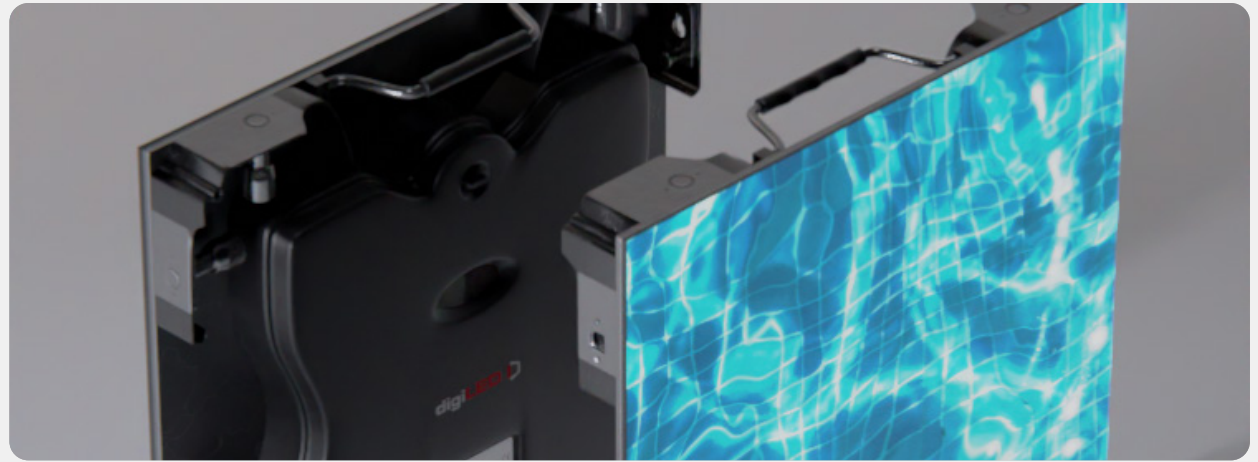
BRIGHTNESS **1,200 nits**

INGRESS PROTECTION **IP 44**

OPTIMAL VIEW DISTANCE **3m**

PIXEL PITCH **3.9mm**

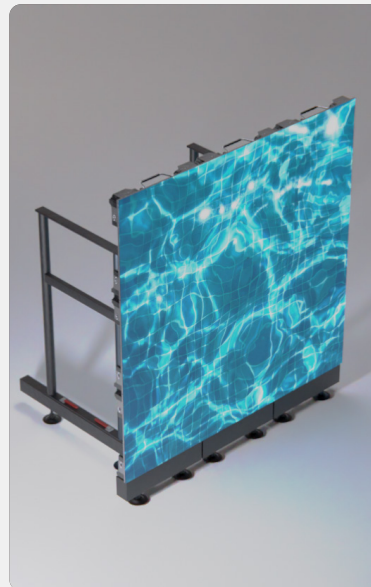
DIMENSIONS **500mm x 500mm x 90mm**



USE CASES

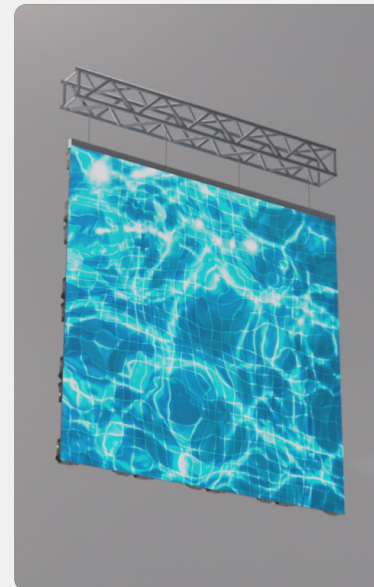
GROUNDSTACK ▼

These panels can be utilised in a groundstack arrangement, allowing for large areas of LED at ground-height at your exhibit.



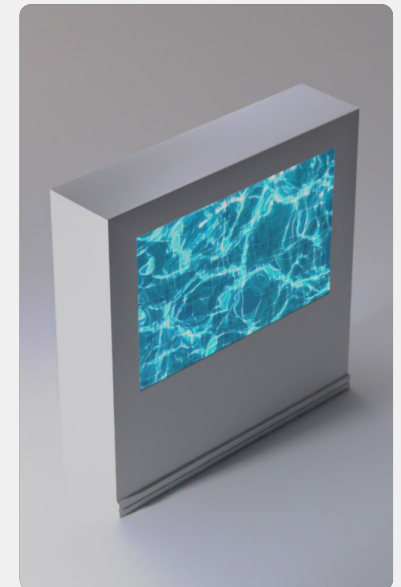
FLYING LED ▼

The HRi 3.9's pixel-pitch means that it is a very competitive budget panel that finds its optimal viewing distance in flying arrangements.



APERTURE ▼

These panels also find use in large-scale aperture arrangements where other videowall solutions would not be sufficient.



CABINET DIMENSIONS

For more information, please get in touch with us:
sales@dbpixelhouse.com | +44 (0)345 226 3083

